

THE RETAIL AT

**799  
BDWY**

SOUTHWEST CORNER OF  
EAST 11TH STREET



 CUSHMAN &  
WAKEFIELD

SAVANNA



# AVAILABILITY OVERVIEW

## AVAILABILITY

Ground: **8,413 SF**

Lower: **8,480 SF**

**Total: \*16,893 SF**

\* Multiple division scenarios considered

## FRONTAGE

**51 FT** on Broadway

**142 FT** on East 11th St

## CEILING HEIGHTS

Ground Floor: **17 Feet**

Lower Level: **17 Feet**

## POSSESSION

Immediate

## LEASE TERM

Long Term

## LEASE TYPE

Direct

## ASKING RENT

Upon Request

## HIGHLIGHTS

- Excellent retail opportunities at the intersection of Union Square and Greenwich Village – steps from Union Square Park, Washington Square Park and Astor Place
- Wraparound frontage on Broadway and East 11th Street with over 190 Feet of visibility with dramatic 17 Foot ceilings heights
- All-glass frontage providing excellent exposure and natural light
- Most logical divisions considered
- Ideal for amenity retailers uses such as Food & Beverage, Fitness, Personal Services, Financial Services, and more.
- Located at the base of a newly delivered and majority leased, 12-story, 177,000 Square Foot Class A office tower with trophy interiors and finishes including a double-height lobby on Broadway
- Presently New Construction



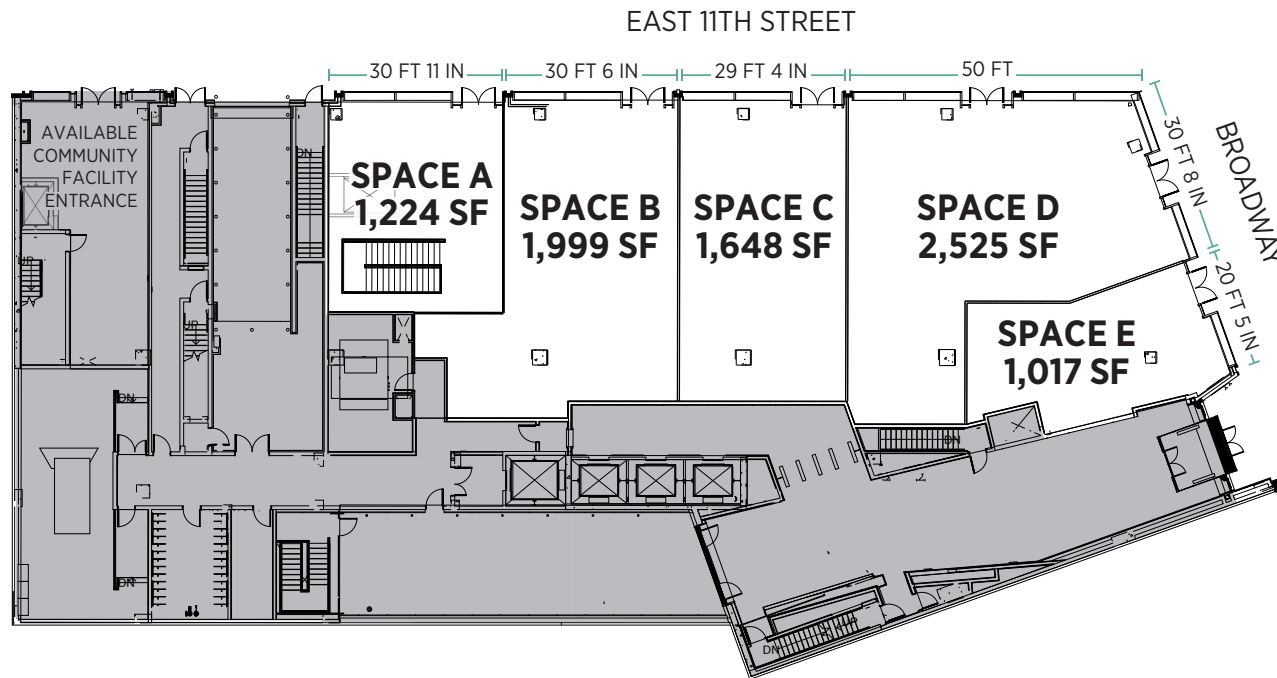
# FLOOR PLANS

## PROPOSED DIVISIONS

### GROUND FLOOR

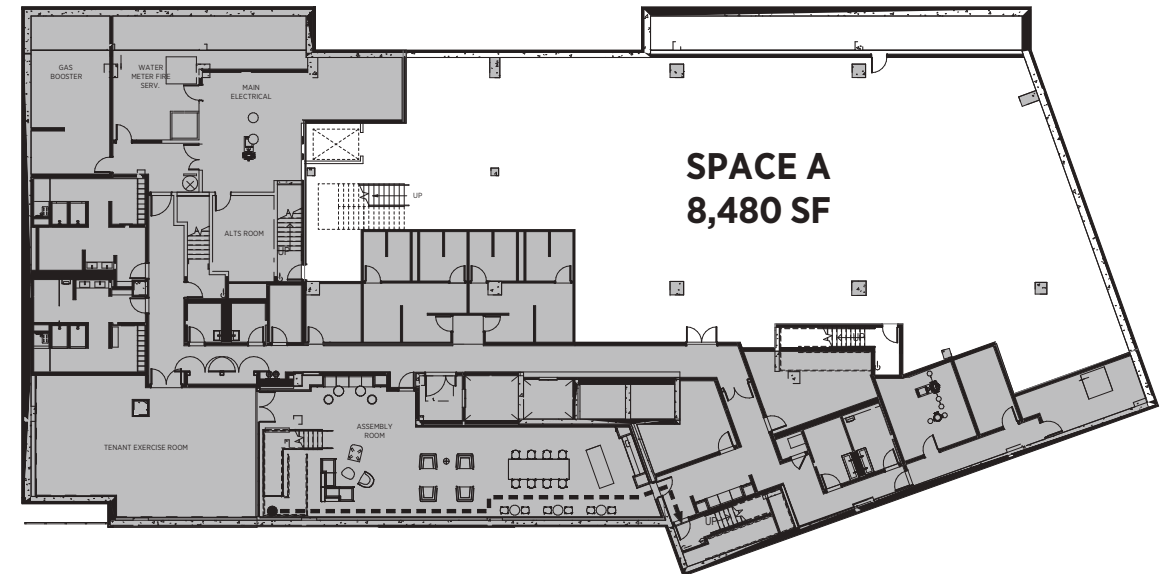
1,017 SF – 2,525 SF

\* All logical divisions considered



### LOWER LEVEL

8,480 SF



# AREA RETAIL

## DEMOGRAPHICS

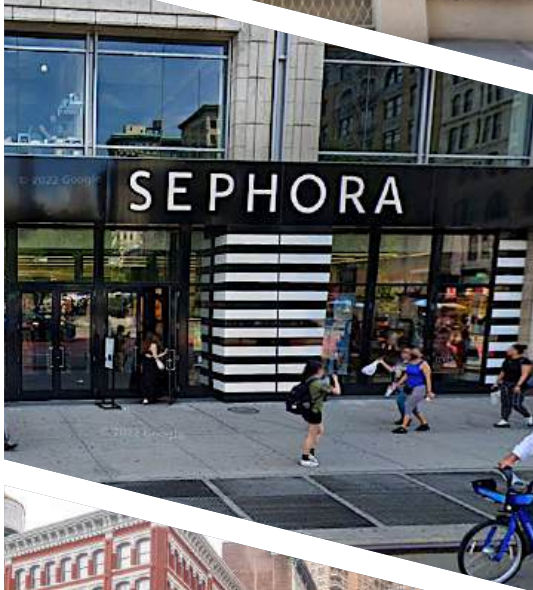
**39,026**  
POPULATION

**18,698**  
HOUSEHOLDS

**233,002**  
AVERAGE  
HOUSEHOLD  
INCOME

**33.7**  
MEDIAN AGE

**46.7%**  
POPULATION  
BETWEEN  
AGES 15-34



UNION SQUARE PARK

N Q R W  
4 5 6 L



# AREA TRANSIT

## WALKING TIME TO 799 BROADWAY

**5 mins**  
From Union Square Park

**4 mins**  
From Astor Place

**8 mins**  
From Washington Square Park

**10 mins**  
From 9th Street PATH Station

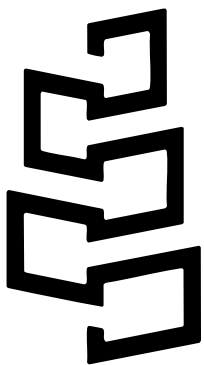
## 2023 ANNUAL RIDERSHIP

N Q R W 4 5 6 L  
**21,527,757**  
At 14th Street-Union Square  
4th Busiest Subway Station in NYC

R W  
**3,780,675**  
At 8th Street-NYU

6  
**3,717,074**  
At Astor Place

PATH  
**975,605**  
At 9th Street & 6th Avenue



THE RETAIL AT  
**799**  
**BDWY**

SOUTHWEST CORNER OF EAST 11TH STREET

PLEASE CONTACT US WITH LEASING INQUIRIES

**STEVEN SOUTENDIJK**

(212) 713-6845 | [steven.soutendijk@cushwake.com](mailto:steven.soutendijk@cushwake.com)

**SEAN MORAN**

(212) 841-7668 | [sean.moran@cushwake.com](mailto:sean.moran@cushwake.com)

**PATRICK O'ROURKE**

(212) 660-7777 | [patrick.orourke@cushwake.com](mailto:patrick.orourke@cushwake.com)



©2025 Cushman & Wakefield. All rights reserved. The information contained in this communication is strictly confidential. This information has been obtained from sources believed to be reliable but has not been verified. No warranty or representation, express or implied, is made as to the condition of the property (or properties) referenced herein or as to the accuracy or completeness of the information contained herein, and same is submitted subject to errors, omissions, change of price, rental or other conditions, withdrawal without notice, and to any special listing conditions imposed by the property owner(s). Any projections, opinions or estimates are subject to uncertainty and do not signify current or future property performance.