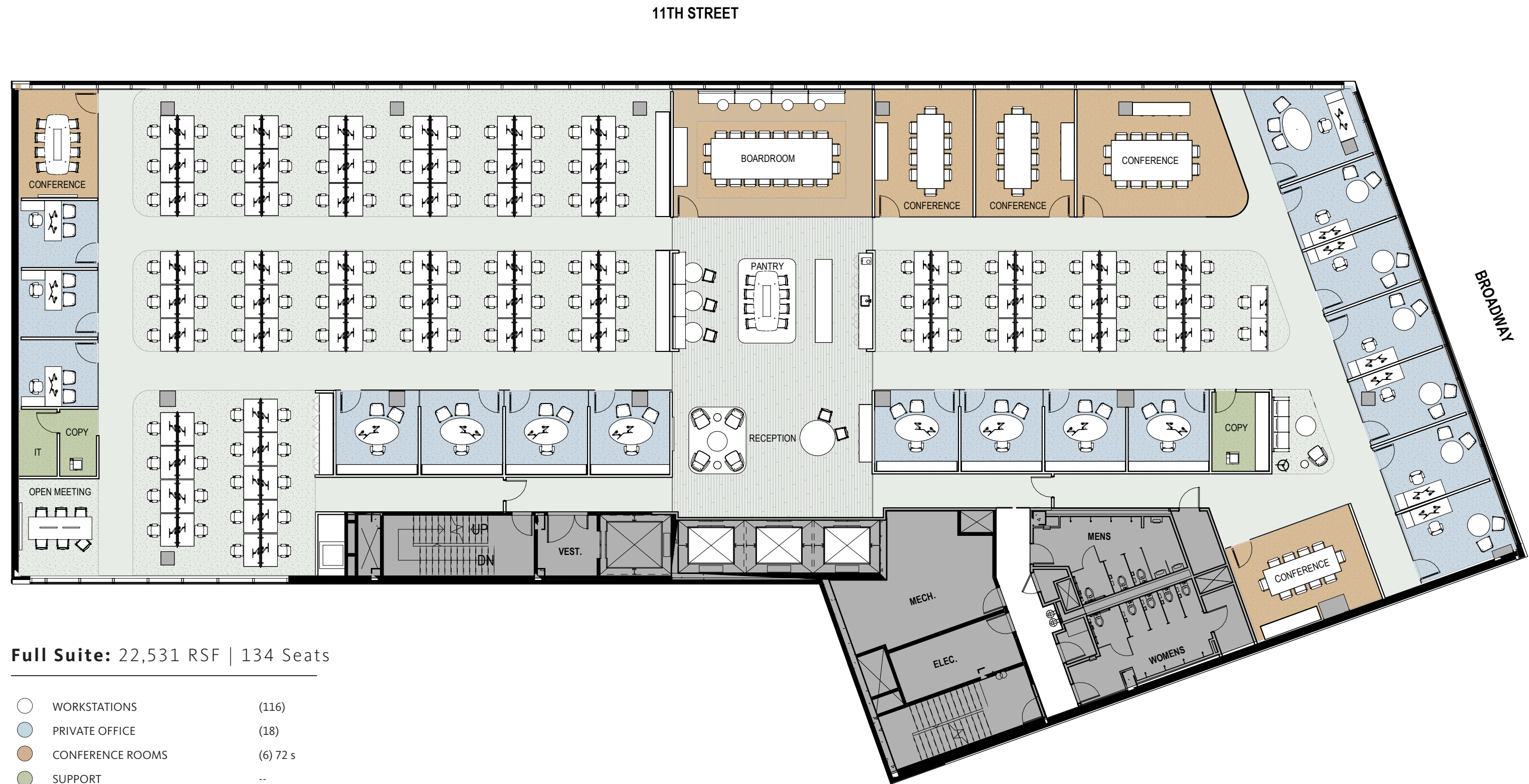


# LEVEL 03 | FLOOR PLAN

One Workplace Suite

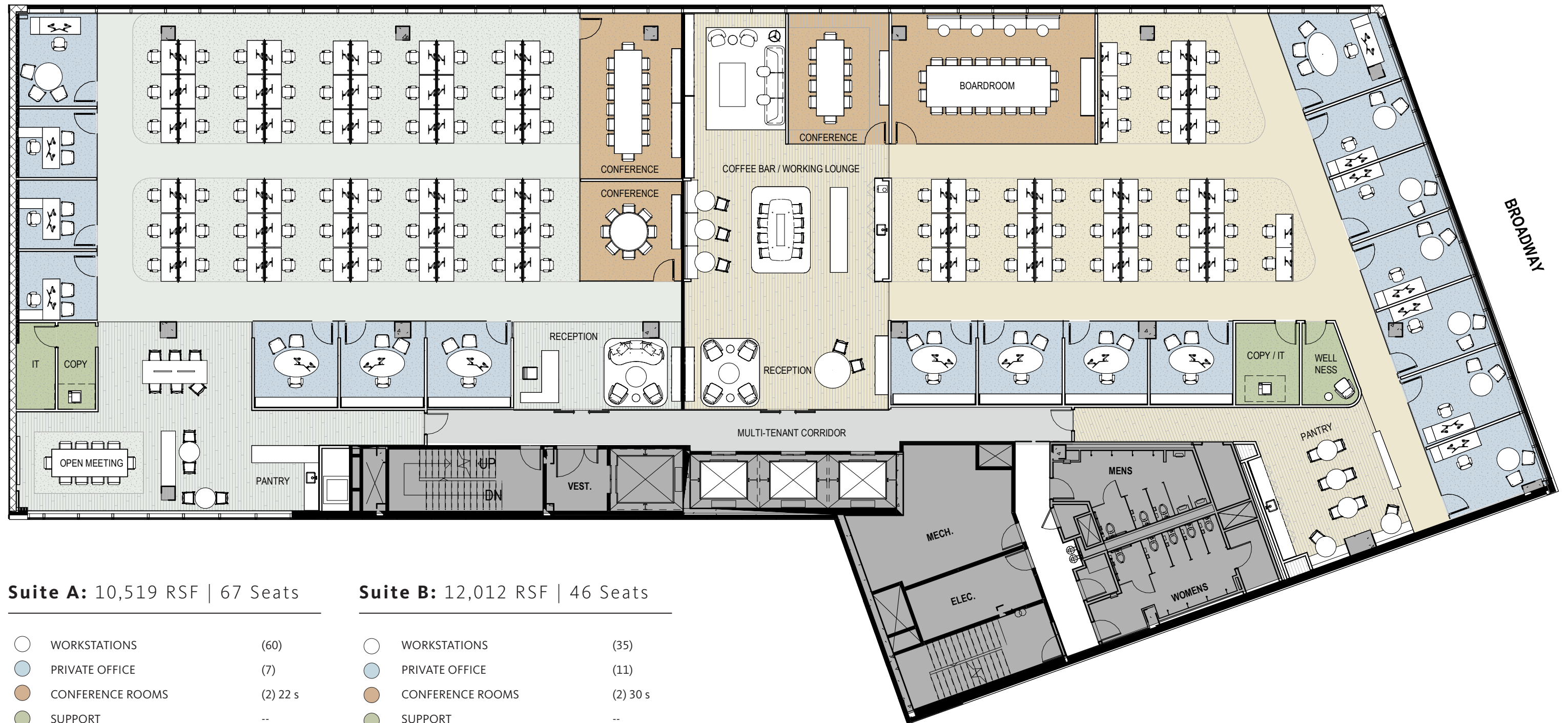


## Two Workplace Suites

**11TH STREET**

## Suite A

## Suite B



**Suite A:** 10,519 RSF | 67 Seats

**Suite B:** 12,012 RSF | 46 Seats

- |   |                  |          |
|---|------------------|----------|
| ○ | WORKSTATIONS     | (60)     |
| ● | PRIVATE OFFICE   | (7)      |
| ● | CONFERENCE ROOMS | (2) 22 s |
| ● | SUPPORT          | --       |

- |   |                  |          |
|---|------------------|----------|
| ○ | WORKSTATIONS     | (35)     |
| ● | PRIVATE OFFICE   | (11)     |
| ● | CONFERENCE ROOMS | (2) 30 s |
| ● | SUPPORT          | --       |